

beyond boundaries.

an open house to discuss
collaborative planning in
our municipalities

welcome!

COUNTY OF VERMILION RIVER,
VILLAGES OF KITSCOTY, MARWAYNE,
DEWBERRY, PARADISE VALLEY



Intermunicipal Study

systems & community services

initiated 2018

**PURPOSE: IDENTIFY REGIONAL
COMMUNITY SERVICE
DELIVERY OPPORTUNITIES
AND FUNDING SOURCES**

**The study will examine present and future
services in the intermunicipal boundary areas
around Dewberry, Marwayne, Kitscoty, and
Paradise Valley, including:**

- infrastructure systems, such as roads, drainage, water, sewer, solid waste
- emergency, fire, protection services
- community recreation services
- schools

population housing employment growth

initiated 2018

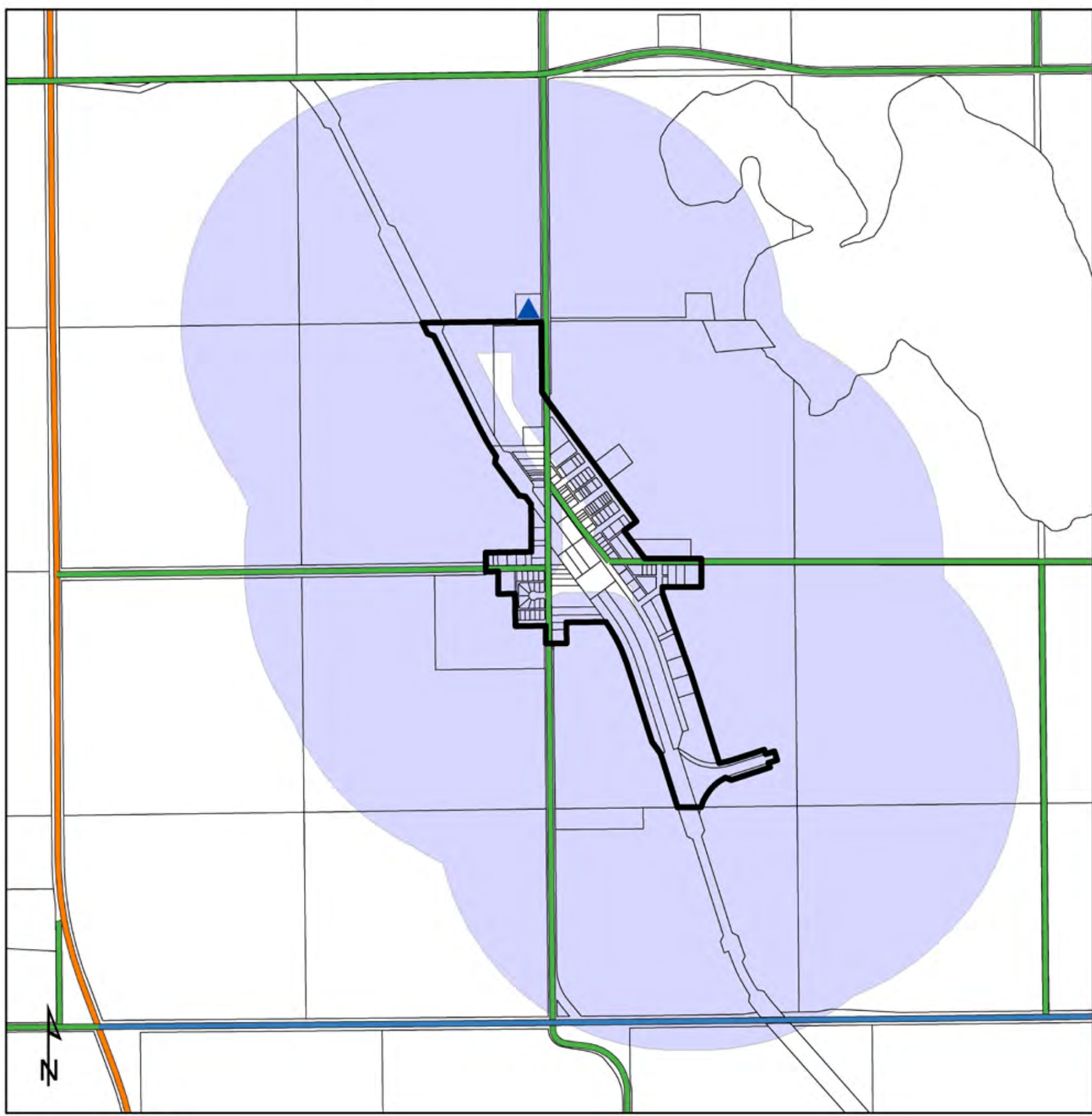
**PURPOSE: ANALYZE HOW OUR
COMMUNITIES ARE GROWING,
AND THE POLICY IMPLICATIONS**

**The study will examine present and future
trends in the intermunicipal boundary areas
around Dewberry, Marwayne, Kitscoty, and
Paradise Valley, including:**

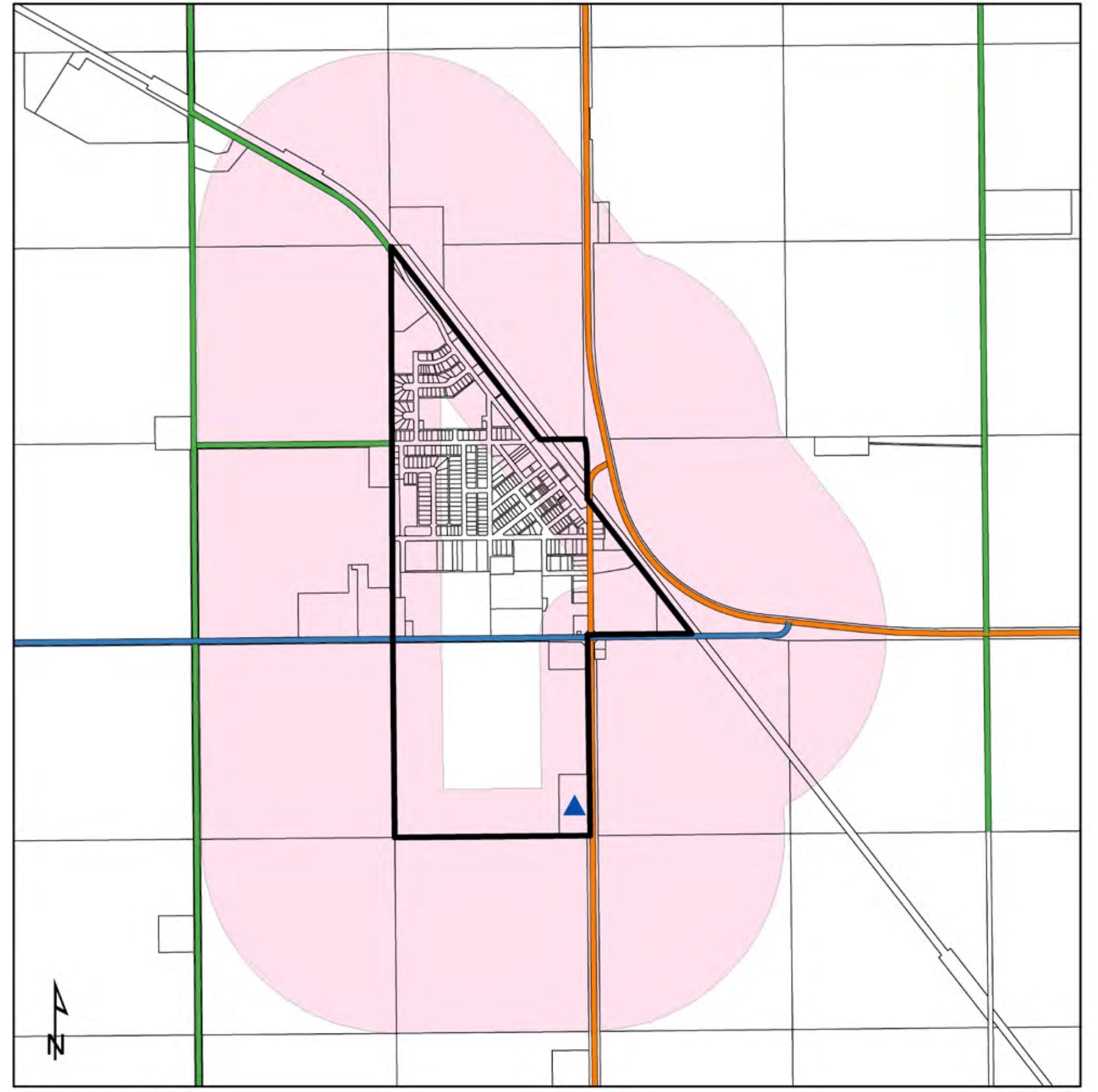
- demographics, growth forecasting
- residential, industrial, commercial
market analysis
- land economics and
- planning policy

Intermunicipal
study
areas

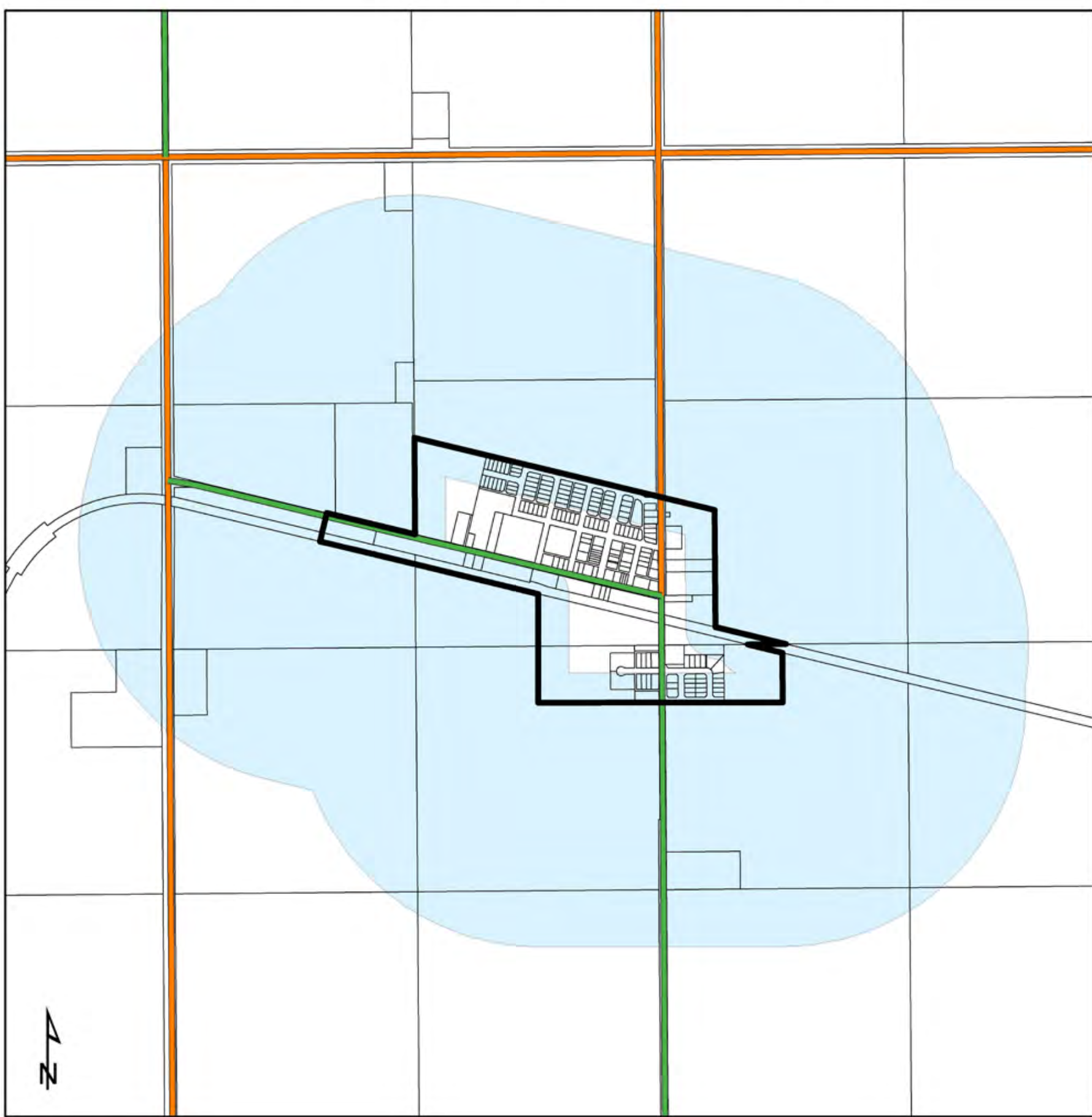
Intermunicipal Boundary - Paradise Valley



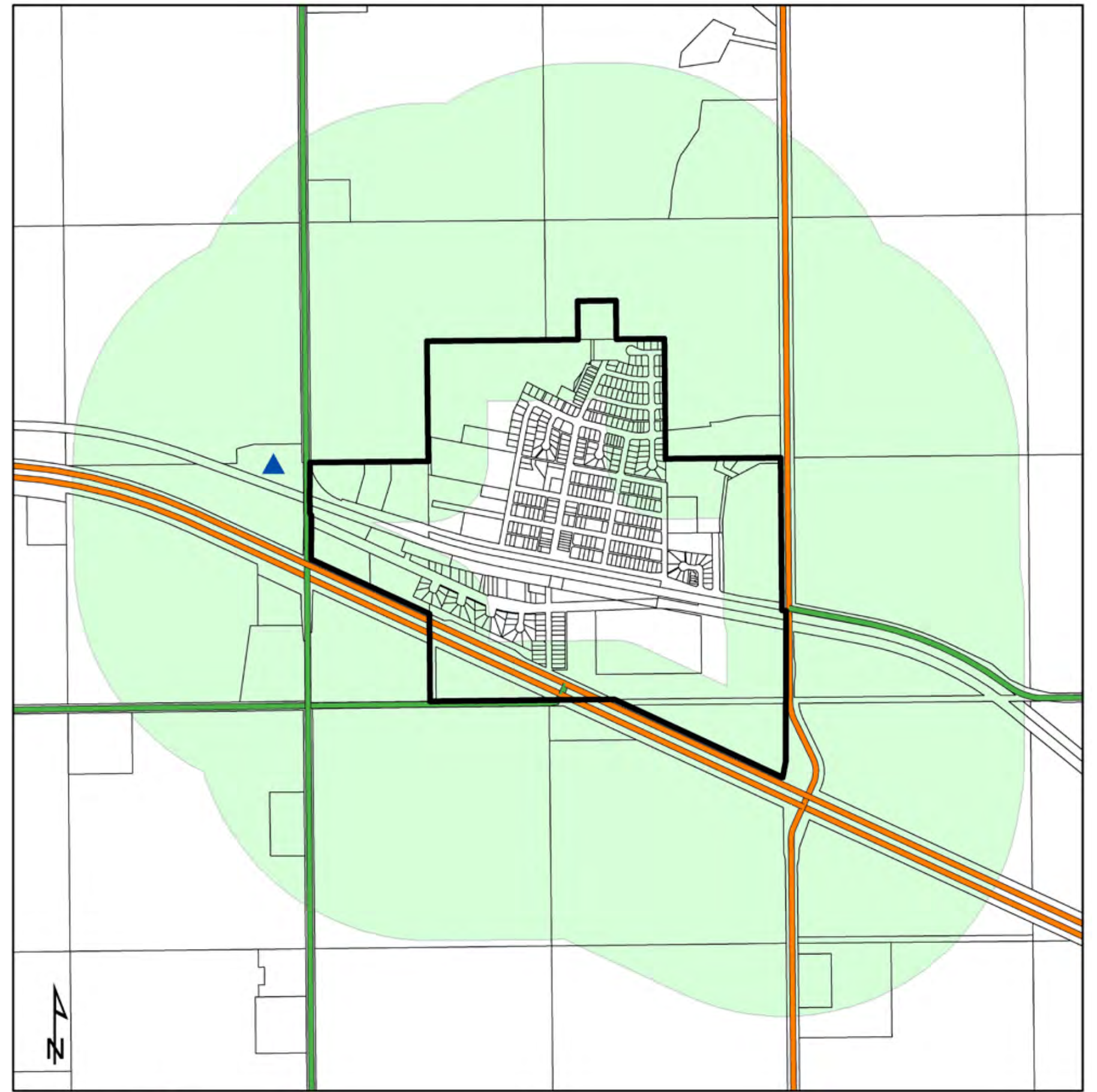
Intermunicipal Boundary - Marwayne



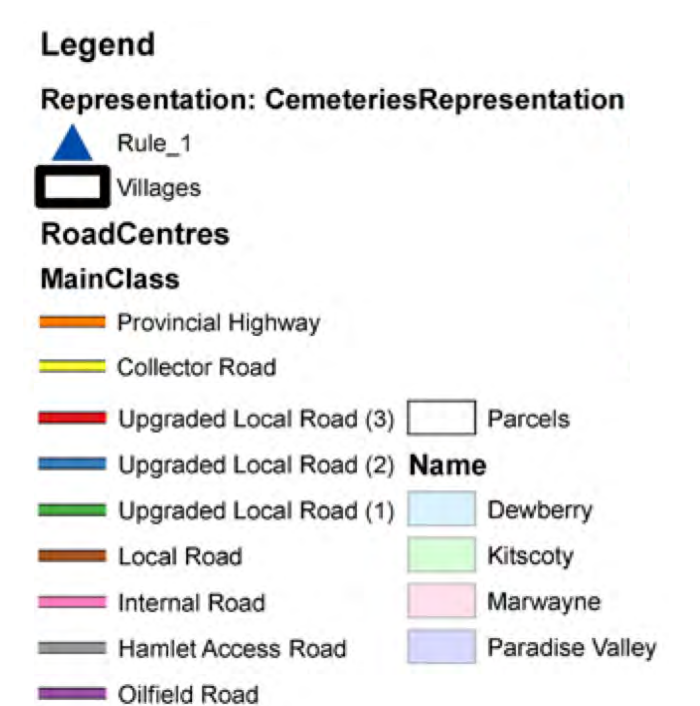
Intermunicipal Boundary - Dewberry



Intermunicipal Boundary - Kitscoty



The Systems & Community Services, and Housing Population Employment Growth studies will examine the intermunicipal boundaries areas highlighted on the maps above.





1

Share your feedback using the forms provided. This information will be used to support our next steps.

2

We will be completing both the Systems & Community Services Study, and the Population Housing & Employment Study in the coming months.

3

Keep an eye out for our next Beyond Boundaries meeting. We plan to touch base again to discuss progress on the Intermunicipal Framework documents and supporting studies.

**next
steps**